



Secretary: Sue Guinness, PO Box 491, Aireys Inlet, Victoria 3231
Mob: 0407 070 641 Email: sjguinness@gmail.com



FROM
THE
PRESIDENT
Alison
Watson

ENVIRONMENTAL POSITIVES IN STATE BUDGET

The recent State Budget announced a significant increase in funding for both Biodiversity Plan 2037 and Parks Victoria. It is pleasing to see the Victorian Government is backing their commitment to our National Parks and the environment but, because of funding decreases in the last 5 years, severe staff cuts, as well as land clearing, increasing invasive plants and animals and the impacts of climate change, still more funding needs to be made available.

The February SWIFFT video conference topic was 'On-line biodiversity data'. There were speakers from the Atlas of Living Australia, Victorian Biodiversity Atlas, Museum Victoria discussing the citizen science website Bowerbird, and Federation University about Visualising Victoria's biodiversity. Citizen Science has a great capacity to improve our understanding of species behaviour by having a vast number of people watching and recording what they see. Bowerbird, www.bowerbird.org.au is a highly successful example of Citizen Science, with 432 members who have contributed 28,055 records and 50,000 images. Another good site is www.inaturalist.org

Both these sites are worth a look. We can contribute our photos to add to the local database. To read more about the recent SWIFFT conference go to www.swiff.net.au and see Patrick Flanagan's report on page 6.

Autumn is a lovely season to be out walking, especially in the heathland. The colours of the birds and plants seem more intense at this time of the year. Common Heath is appearing everywhere and catching the shades of red, crimson and pink flowers against the low sun and the yellow flowers of the Silver Banksia with the sea in the background are magical. It is a great time to be out in the bush observing and record our findings later on a citizen science site.

CAMERA FUNDING APPROVAL

We are delighted to announce the Norman Wettenhall Foundation has approved our application for funding to purchase more up-to-date cameras for our camera monitoring program. We now have \$2432 to spend on replacing three of our older cameras.

As mentioned in the February newsletter, we put cameras out at Distillery Creek near a suspected Spot-tailed Quoll latrine. So far we have not had any sightings of Quolls, but the site was visited by Kangaroos, Wallabies, multiple times by a Short-beaked Echidna, a Grey Shrike-thrush, a skink and a Brush-tailed Possum. Not being an expert on skinks, I sent the best frame to the Museum of Victoria Discovery Centre for help with identification. Their Herpetology expert has identified it as a Garden Skink (*Lampropholis delicata/guichenoti*).



The Echidna spent a long time hunting for ants in the area around the three cameras and I have combined the frames from the three cameras into an animation.

In early April we placed six cameras in and behind gardens on the cliff side of Federal St, Aireys Inlet, the road leading up to Split Point Lighthouse. We chose this area because of a report by a resident of a rodent drinking from a birdbath in their back yard. We certainly did find evidence of a rodent with an estimated 600 frames on 4 of the 6 cameras containing a Black Rat *Rattus rattus*. We are sure of the identification because of the greater length of the tail, relative to the length of the body.

We also got some shots of a young Red Fox *Vulpes vulpes* in one camera. The GPS location of the fox has been passed on to Parks Victoria staff working on the Otway Ark project monitoring feral pests in the Great Otway National Park. Finally, there were some nice shots of a Rufous Bristlebird in two cameras placed in Federal St, Aireys Inlet. The coloured shots have also been made into an animation.

Both animations can be enjoyed on the ANGAIR website. To view them, go to www.Angair.org.au, select Friends of Eastern Otways in the Friends Groups menu and look under Reports.

Finally, we recently put out 3 cameras behind the dunes west of the car park, at the ocean end of O'Donohue Road in Anglesea. We hope to get some shots of bandicoots, either Long-nosed or Southern Brown, or perhaps both. **Patrick Flanagan**



ENVIRONMENTAL WEEDING

Tuesdays 9.30am–11.00am

Contact: Margaret 0412 652 419

A visit to a local coffee shop will follow the weeding activities.

MANGOWAK SCHOOL SANCTUARY

June 13

Meet in the carpark adjacent to Aireys Inlet Community Hall at 9.30am.

This will be our third session in the Mangowak Sanctuary at the Aireys Inlet Primary School. On our last two sessions in April and May, we worked with the teachers and young students in an effort to help them understand the value of the indigenous vegetation so close to their school environment. It has been a pleasure working with the children and we look forward to another session on June 13. Mangowak is the indigenous name for Aireys Inlet.



Above: Students participating in the environmental weeding session at Mangowak School Sanctuary at the Aireys Inlet Primary School.

GREAT OTWAY NATIONAL PARK

July 11 & August 8

Meet at O'Donohue Road Beach Access car park, Anglesea at 9.30am.

We will work on Tea-tree removal in the dune area, which will extend the work currently being done by GORCC on the adjacent dunes.



COMING EVENTS

ANNUAL KOALA COUNT



Saturday June 17

Contact Kaye Traynor 0408 551 667

Meet at the Aireys Inlet Community Hall car park at 9.30 am.

Join us for our annual count of Koalas along Grey River Road at Kennett River.

It's a fun day out looking for and counting

Koalas. We will also have plenty of opportunity for bird watching. Bring your morning tea, lunch, water, sturdy footwear and any wet weather gear necessary. And remember to bring your binoculars.

TEDDY'S LOOKOUT CIRCUIT

Saturday July 15

Contact Sue Guinness 0407 070 641

Meet at the Aireys Inlet Community Hall car park at 9.30am

A stunning walk along the St George River which takes in the Allanvale Mill site. There is the option to also walk Tramway Track if you would like to walk further, either a 5 km or 7.5 km total walking distance. Bring your morning tea, lunch, water, wet weather gear and wear sturdy footwear.

VISIT TO FRIENDS OF WERRIBEE GORGE AND LONG FOREST MALLEE

Saturday August 19

Contact Sue Guinness 0407 070 641

Meet at Angair at 9.00am to car pool to the meeting point - the car park on the NW side of Long Forest Rd, just north of Sundew Avenue at Long Forest by 10.30am.

This month we will meet with the Friends of Werribee Gorge and Long Forest Mallee who will guide us for a walk through the Nature Conservation Park which protects Rocky Chenopod Woodland. It has the most southern occurrence of Mallee vegetation in Victoria.

The reserve offers a high diversity of flora and fauna species with over 400 native plants and more than 160 bird species listed. We will also help with some creekside planting. After lunch we will take a different track through the reserve before returning to our cars.

Bring morning tea, lunch, water and wear clothes comfortable for walking and planting. Planting equipment will be provided.



Above: A track running through Long Forest Mallee Nature Conservation Reserve. Photo: Parks Victoria.



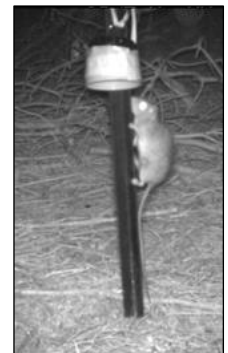
MAMMAL SURVEYS

FIRST TUESDAY

Contact: Patrick 0437 561 702

Meet at Angair office Anglesea
Mammal surveys using our remote cameras are usually carried out following the committee meetings on the first Tuesday of each month.

We are always pleased to welcome any people interested in our indigenous fauna to participate in these activities.





FRIENDS' ACTIVITIES SINCE OUR LAST NEWSLETTER

URQUHART BLUFF ENVIRONMENTAL WEEDING – March 14

We had one more weeding session in the Urquhart Bluff area in March where we had been concentrating our efforts over the summer months, once again removing huge quantities of the Flax-leaf Broom which is listed as a weed of national significance. It was great to see Chris and Lynn on one of their regular visits to Anglesea.

The area is one that we will revisit as it still needs a great deal of attention. However our philosophy has always been not to clear large areas at a time and we will be keen to see how the site recovers in the next 12 months. We returned to the site on April 24 to plant 10 Seaberry Saltbush *Rhagodia candolleana* seedlings in an area where we had removed an extensive area of Flax-leaf Broom. We are confident that natural regeneration will occur on the site. **Margaret MacDonald**

Pictured below are hot and weary workers after the March weeding session at Urquhart Bluff.



SERENDIP SANCTUARY - March 18

It was a very small group that joined us for a visit to the Serendip Sanctuary near Lara on Saturday, March 18 with many of our members having other commitments on that day. We were pleased to welcome Louise, a new member of the Friends of Eastern Otways, who has been helping with our weeding activities but this was her first bushland activity with us.

Set in the Western Volcanic Plains, Serendip enables visitors to observe the wetlands and grassy woodlands of this environment. Unfortunately, but as can be expected in the autumn, conditions were dry and much of the vegetation looked stressed and obviously was waiting for some autumn rainfall. Recent planting should improve the vegetation once it gets established. The only mammal species we encountered was a group of usually solitary Black Wallabies resting in the shade.

As we strolled along the Wildlife Walk we saw Whistling Kites soaring overhead, Cape Barren Geese wandering about, Brolgas feeding in an enclosure, endangered Masked Owl, Australian Bustard, Bush Stone-curlew, White-faced Herons resting on a branch of one of the eucalypts and a great viewing of a pair of Tawny Frogmouth watching us as we walked by. Unfortunately photography opportunities were limited with the animals often at a distance behind fences.

It was the wetlands and marshlands that gave us the greatest pleasure as we found outstanding opportunities for birdwatching from viewing areas and bird hides. Unfortunately it is often not easy to use cameras with protective fencing ensuring the safety of the rarer species. We did have a great viewing of some Freckled Duck, Australia's rarest waterfowl, and many of the more common species of ducks, spoonbills, swampheens and moorhens. A group of Magpie Geese captured our attention on one of the wetlands.

After a few hours wandering about we were happy to return to the carpark and find a shady tree where we had lunch before returning home. Food always tastes much better in the outdoors and when we are hungry. **Margaret MacDonald**

Below: A small group enjoyed close encounters with Tawny Frogmouths and Black Wallabies at Serendip Sanctuary.





FRIENDS' ACTIVITIES SINCE OUR LAST NEWSLETTER

A COMPLEX GAME - GPS TRAINING - March 29

As we advised in our November Newsletter, the Friends of Eastern Otways were successful with an application to the Department of Environment, Land, Water and Planning for a \$5000 grant to develop skills in ecological survey techniques using GPS equipment.

On March 29, 12 people came along to the CFA rooms in Anglesea to take part in this training session. We had invited representatives from various conservation groups to participate and it was a great network of people who responded. Members from FEO, ANGAIR, Geelong Field Naturalists, Torquay Landcare and Deakin University joined with Rani Hunt (Threatened Species Officer – DELWP) to delve into the complex world of GPS usage. Some of the group were quite experienced in using GPS units and this enabled the training being run by Peter Terrett 4D Global to be more effective. Peter is certainly an expert in his field but it is not easy to share this knowledge in one training session.

The morning involved a general presentation by Peter concerning how the equipment operates. The afternoon session included a field practical exercise in navigation. While we all enjoyed the day's activities it is obvious that we need follow-up training and constant use of the equipment to make the GPS an effective tool for our ecological needs.

Margaret MacDonald



MOGGS CREEK/COALMINE CREEK WALK – April 15

Easter Saturday dawned cool and brisk when 17 brave Friends including family and friends turned out to walk from Moggs Creek to Eastern View. It was wonderful to have Lachie and his daughter Mary join us for some of the walk, as well as Ross's daughter Bridget, all the way from the USA and Max from India & Canberra!

After a steady climb to the top of the ridge it was time for a coffee break and to peel off outer garments. It was not until we reached more sandy country that Marg MacDonald spotted two patches of Wrinkled Buttons *Leiocarpa gatesii*, a rare and threatened plant species that we had observed in the area when we last walked there with the Friends six years ago.

Numerous birds were spotted along the way including Spotted and Striated Pardalotes, Eastern Spinebills, Yellow-faced, White-eared, Brown-headed, New Holland and White-naped Honeyeaters plus Red Wattlebirds. We also saw Yellow-tailed Black Cockatoos, Scarlet Robins, Superb Blue Wrens, White-throated Treecreepers, Eastern Yellow Robins, Magpies, Welcome Swallows, Brown Thornbills, White-browed Scrubwrens, Pied Currawongs, Starlings and Crimson Rosellas plus a few unidentified small brown birds.... Max was keenly learning some of the Australian species with which he was unfamiliar.

Apart from serious erosion on the service tracks and the noisy trail bike riders, walking amongst the various Eucalypts was a great break from the busy Easter crowds not far away. We finished at the Great Ocean Road Archway at approximately 2.00pm where the shuttle cars took the walkers back to Moggs Creek.

Ross Murray





FRIENDS' ACTIVITIES SINCE OUR LAST NEWSLETTER



CHRISTMAS IN APRIL

As its name implies, the Victorian Christmas Bush *Prostanthera lasianthos* var. *lasianthos* is usually in full bloom at Christmas. It is a large shrub or small tree to about 5m high and grows in moist gullies and lowland forests. When the Friends of Eastern Otways upgraded the Distillery Creek Nature Trail signs in 2011, a very fine *Prostanthera lasianthos* var. *lasianthos* was growing near the boardwalk where a sign titled 'A Bush Christmas' was

installed. Both were always greatly admired by people walking the track.

Unfortunately the tree has since died, and so in April this year the Friends met to plant some young *Prostanthera lasianthos* var. *lasianthos* near the sign. We are optimistic that with the good rainfall this autumn, the seedlings will grow and flourish in the area once again giving meaning to our sign.

Right: Alison Watson shows young FEO member Ollie Crowcroft how to plant the Christmas Bush.



ANGLESEA HEATH WALK – May 20



It was the perfect day for a walk, a little chilly to start but we soon warmed up. Beginning at Haggarts Track we were soon through the trees and out onto the heath with satisfying views all around. The Common Heath was brilliantly coming into flower and masses of Twisted Beard-heath as well. We found a few of the rare Juniper Wattle plants flowering (at right with Kaye Traynor, Alison Watson and Margaret MacDonald) and Anglesea Grevillea that was not yet in flower. There was lots of fungi including an unusual *Calostoma* sp. At lunch we were thrilled to observe two Wedge-tailed Eagles using the currents and circling above us. We saw only one trail bike along the



track, though plenty of evidence they had been there, including illegal tracks and about 15 cars with bike trailers parked on Gum Flat Rd. Towards the end of Alladyce Track Margaret found us a single flowering Autumn Greenhood (above left). It was a really enjoyable walk in good company. **Alison Watson**

MEMBERSHIP SUBSCRIPTIONS

Thank you to everyone who has renewed their subscription for 2017. The Friends of Eastern Otways from time to time makes submissions to the State and Federal Governments concerning issues we believe are important to the conservation of National Parks in general and to our Great Otway National Park in particular. The message is strengthened by the number of our supporting members. We encourage everyone to receive their newsletter by email, saving volunteer's time and the need to print, purchase envelopes and labels, and postage. Please note, emailed copies are in beautiful color, posted copies are black and white.



FRIENDS' ACTIVITIES SINCE OUR LAST NEWSLETTER

REPORT OF SWIFFT VIDEO CONFERENCE: Threatened Species Initiative – case studies

Three members of Friends of Eastern Otways, Margaret MacDonald, Kaye Traynor and Patrick Flanagan, attended the SWIFFT (State Wide Integrated Flora and Fauna Teams) video conference in April at the DEWLP offices in Geelong. The venue was linked via video hook-up to many locations around the state, from Warrnambool to Bairnsdale and Melbourne to Mildura, so it was truly statewide, with 88 participants across 16 locations watching and listening to six presentations.

The focus was on threatened species protection and we heard case studies describing on-ground efforts to remediate Crown Land reserves by the Ballarat Environment Network, restoration of a large ephemeral wetland of over 8,000 hectares by the Friends of Winton Wetlands (formerly known as Lake Mokoan in NE Victoria), and rewilding Korong Ridge (between Inglewood and Wedderburn). All spoke of the Herculean efforts at weeding, (mostly gorse), pest eradication, replanting,



direct seeding and propagation, habitat protection and enhancement as well as ongoing maintenance of the sites. We found it informative and interesting to hear and see out what similar, like-minded groups are doing to preserve, protect and repair the natural environment in their area and to understand the challenges they face and the effort they put in.



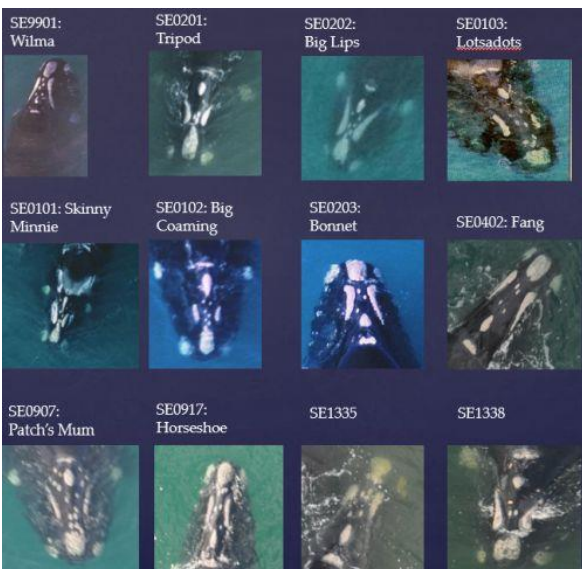
We also heard descriptions of policy level work to support threatened species in two presentations. One was an overview of the success of the funding program to support the initiative and a second on Biodiversity 2037, the recently adopted plan to protect Victoria's

biodiversity that is the new Flora and Fauna strategy forming part of the Flora and Fauna Guarantee Act.

This presentation tried to put some flesh on the bones of the plan, by describing the monitoring, reporting and evaluation frameworks and also steps to be used to measure biodiversity, such as the Victorian Biodiversity Atlas (VBA), which is a repository of sightings, results of systematic monitoring and mapping of Victoria's biodiversity. The use of the VBA is of particular interest to us, as much of our monitoring work in the Eastern Otways (the annual Koala count and *Caladenia maritima* census as well as the results of our ongoing camera monitoring) is added to the atlas as a matter of course.

My ears pricked up when a speaker mentioned that an app for a smart phone is under development to allow data to be captured and loaded into the VBA in the field. This should make the task of entering observations on the Atlas much easier, which should ensure it becomes a more effective tool to measure biodiversity and get me away from spending hours in front of the computer entering data into the VBA, when I'd prefer to be out in the field!

The standout presentation for us was that by Mandy Watson from DEWLP Warrnambool, who described research on the abundance, distribution, monitoring and movement of Southern Right Whales (SRWs) in SE Australia. Of course, we know them as welcome and regular visitors to our beaches and bays during our winter, when they come north to warmer waters to calve before making the trip back to Antarctic waters with their newborn offspring.



Mandy provided estimates of the change in the population at Warrnambool, the only known breeding site in SE Australia. By the best estimate there are only 250-300 individuals. Recovery of the species is quite slow and has not increased much in the last 30 years, unlike the Humpback Whales. She also described the threats to the species, such as vessel strike, noise interference (such as seismic testing for oil in the Great Australian Bight, another of their important breeding sites, entanglement in fishing nets, etc.)

Each whale is different, and Mandy detailed a project using picture databases of SRWs to enable monitoring of them at an individual level. It seems to be a human trait to name our companion animals, as you can see in the photographs (shown at left), using the identifying marks, much like our fingerprints. The females are identified and named and can be tracked as they calve, or move between SE Australia, the Bight and SW Australia. We can only hope that we might recognise some of the visitors to our coast.

The SWIFFT video conferences are held quarterly and are not exclusive. If you would like to attend future ones, you would be more than welcome. The next is in July and is discussing Local Government conservation management including roadside vegetation. Contact, me (prflanagan@gmail.com), if you would like to come along. The SWIFFT website (swiff.net.au) has more information about future video conferences as well as speaker's notes from the April meeting, and other previous meetings. **Patrick Flanagan**



VOLUNTEERING IN PARKS FIVE YEAR STRATEGIC PLAN

David Major, Executive Director Visitor Engagement and Conservation, Parks Victoria

I would firstly like to recognise and thank you for your group's continued volunteering support to Parks Victoria. Volunteers make an incredible contribution to Victoria's parks, helping to maintain Victoria's parks, promote connections between parks and our diverse community and increase health and wellbeing. We are extremely appreciative of your efforts.

Over the past 18 months, Parks Victoria has undertaken a review of our volunteer management practices to ensure we can continue to support and grow volunteering. We appreciate your patience and understanding while we have been establishing our vision for the future and your acceptance of some changes already communicated. Parks Victoria's goal is to establish a world-class approach to working with volunteers that is embedded within our business and effectively engages volunteers in safe, innovative and meaningful activities to improve the health of the park, the broader community and yourselves.

The new Volunteering in Parks Strategic Plan will be delivered over the coming five years. The Plan renews our commitment to volunteering and recognises our role as a key volunteer management agency within Victoria. Implementation will set consistent, safe, state wide directions and priorities for Parks Victoria to deliver volunteering programs across the parks network. The Plan demonstrates our support to the existing volunteers and programs and sets out the ways that we will develop new and diverse volunteer opportunities.

One of the first initiatives to be developed is the modernisation of our volunteer management through the introduction of a new online management system called ParkConnect. ParkConnect enables staff that manage volunteers and authorised volunteer groups to collaboratively plan and manage volunteer activities, as well as promote volunteering opportunities to the wider community. It allows anyone to set up an account, register to volunteer, view and join current planned activities, join an existing volunteer group or start and manage their own group. ParkConnect is an important way in which Parks Victoria can make volunteering more accessible and promote volunteer opportunities more broadly. The ParkConnect system will be available from 1 May 2017.

Sessions to discuss the Strategic Plan and deliver targeted training for ParkConnect will be offered to volunteer group leaders up to 31 December 2017. Your group will soon receive an invitation to a session in your area with more detailed information on how ParkConnect can benefit you. We believe the new system will greatly improve the way in which we engage with our groups and volunteers and in turn assist you in your engagement and group administration.

Parks Victoria is excited about the future of volunteering and we are committed to working together. More details on the Volunteering in Parks Strategic Plan will be available on the Parks Victoria website (www.parkweb.vic.gov.au) in the coming weeks. For further advice on this matter in the meantime, please contact Parks Victoria's Volunteer Coordinator, Leesa Riley on Phone 8427 2426.

UPDATE ON EUMERALLA BIKE TRAILS

Deakin has carried out testing for Cinnamon Fungus *Phytophthora cinnamomi* around the site of the bike tracks at Eumeralla and we are awaiting the results. We undertook a plant survey in preparation for an alternative trail so the grasstrees track can be closed. This is being followed up with Native Vegetation requirements from DELWP. A list of cultural requirements is being developed to seek approval for track works in the area. Track names are being requested from various groups so we will have an input in conjunction with Angair, Wathaurong and bike riders.



A workshop was held in Torquay in April with representatives from many groups. It was geared to creating a vision for mountain biking in our area as Anglesea had been identified as a biking hub due to increasing interest and 'established' tracks throughout the region. Michelle Anstee (Parks Victoria) believes the regulation of the tracks in Eumeralla will mean less illegal tracks throughout Anglesea and Aireys Inlet and it will be easier to manage existing tracks. **Alison Watson**
Left: Cycling in Great Otway National Park. Photo: Parks Victoria

KANGAROO ACTION GROUP

The Anglesea and Aireys Inlet Kangaroo Advisory Group (KAG) is hosting an upcoming free public presentation titled in Anglesea titled "Solving the wildlife, roads and traffic conflict..." The guest speaker is Rod van der Ree who will discuss local and international research focussed on solving the conflict between wildlife, roads and traffic. The presentation will be held at the Anglesea CFA Community Room on June 7, from 10.30am to 12 noon. See attached flyer for further information.

Right: The sad result of conflict between wildlife, roads and traffic.



THANKS FOR THE DONATIONS

On behalf of all the Committee, I would like to express our gratitude to all the members who have so kindly donated money to the Friends this year. We may only be a small group but we certainly pack punch above our weight and this gives us the encouragement to keep going. **Ross Davey, Hon Treasurer**

Hello Everybody,

For those of you that I have not had the chance to meet yet my name is Matt, and I am the new Ranger at Lorne. I will be working with Katrina Lovett on a range of landscape management projects within the park estate. I would like to take this opportunity to thank everybody in the Friends group who have helped me understand the area and the work ahead.

STAFF MOVEMENTS

Great news - Kieran Lieutiter will be taking over in Craig Hobbs' Field Service Officer Position while he is in the Ranger Team Leader role, while Cathy Longmore will be using the services of Grace and Felix to assist with the many tasks in the Otway Ark Project. Finally, some of the Project Fire Fighters have had their contracts extended and will be out in the park performing a range maintenance projects.

It is the end of an era with Sam Griffiths moving on from Lorne after three decades in the job. His incredible knowledge and dedication to the Great Otway National Park will be missed around the district, especially in the Lorne office.

OUT AND ABOUT IN THE PARK

Another autumn burning program has come to an end with a large amount of rain recently falling across the area. However, the fire staff at Parks Victoria are hopeful of completing more burns around the Anglesea area if conditions improve.

The fuel reduction burns that were completed went very successfully, specially the large fuel reduction burn that happened between Big Hill and Lorne. I am sure that everybody saw the smoke drifting around. You might have also seen the specialised aircraft that was used for the lighting and control of the burn. The community response that PV/DELWP received was positive with the department making a considered effort to inform the community, and keep them up to date with what was happening.



Parks Victoria Staff have also wrapped up another busy Easter weekend, with the Bells Beach Surf Competition bringing large numbers to the iconic area. Further west, the Great Otway National Park saw large numbers of tourists using the facilities on offer. For example, on April 15-16 Erskine Falls had 3,800 visitors with many parking along the road to the falls. Whilst the staff who patrolled Easter weekend did have to manage a range of minor compliance issues the Easter weekend went successfully.

Recent heavy falls of rain and strong winds continues to hamper staff with many fallen trees and water causing damage to tracks and infrastructure. Whilst we are doing our best to keep on top of track damage, if the group notices any issues let me know and I can pass it on to the responsible person.

Finally, I have only one closure to report which is the Kalimna Falls link track. However, if anyone wants to walk to Kalimna Falls the main track is still open with loop options on the other side.

Thank you once again for your stewardship and dedication to the Great Otways National Park. **Matt Russell, Ranger, Lorne.**

RANGER MATT RUSSELL

Hi, I am Matt Russell and I joined the Surf Coast team after working at Bacchus Marsh for two years as a project manager for the pest plant and animal program. I also looked after a variety of threatened species projects, including a project focused on the protection of the Rocky Chenopod plant community, which is a rare collection of plants that primarily exists in the Long Forest Nature and Conservation Reserve.

Before joining Parks Victoria, I worked for many years for a Landscape Management company in the Melbourne area. I led a variety of regeneration projects including stream regeneration, large habitat regeneration projects, exotic tree removals, urban park construction.

I also have an educational background in the natural resources field with an Associate Degree in Forestry Management from University of Melbourne, and a Bachelor Degree in Social Science (Environment) from RMIT. I am passionate about ecology, and have a keen interest in growing vegetables and cooking, so if the group has any cuttings for the new garden in Deans Marsh I will gladly accept them.

